

# LFXPRO SERIES Outdoor Lighting

LFXPRO-LG-50-150W-MCTP-WH  
POWER & CCT ADJUSTABLE FLOOD/AREA LIGHT

**MCTP** Multi Color Temperature & Multi Power/Wattage (Selectable)

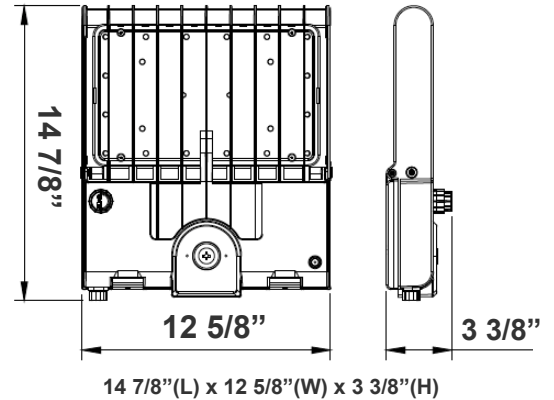


Customer Name: \_\_\_\_\_

Project Name: \_\_\_\_\_

Note: \_\_\_\_\_

Type: \_\_\_\_\_



Ideal for general site lighting, alleys, loading docks, doorway, pathway, and parking areas.

## Features

- LED Flood Light
- With snap-on & bolt mounting options for one-person Installations.
- Select a mounting option (Sold separately)
- 70,000 Hours Rated Life
- 7-Year Warranty
- Optic Lens Type: III
- Multi-CCT & Multi-Power - The Switches are on the Bottom of the Fixture

## Technical Specifications

### Electrical:

- Voltage: 100-277V AC 50/60Hz
- Wattage: 50W/ 80W/ 100W/ 150W
- Power Factor: >0.9
- Output Current: 0.25A
- Efficacy: 125 LPW
- THD: <20%

### Mechanical:

- Housing: Die-cast Aluminum Housing with Powder Coat Finish (White)
- 10KV Lightning Surge Protection
- Operating Temperature: -40°F to 104°F
- IP Rating: IP65
- Suitable for Wet Locations
- Effective projected areas (EPA's) are:
  - Front = 0.38 square feet
  - Side = 0.30 square feet
  - Face = 1.05 square feet

### Lighting:

- Dimmable: 0~10V
- Solid State Lighting technology for long life, no Maintenance needed and High-Efficiency
- Lens Type: Optical TYPE III Lens, High Light Transmittance PC, Anti-UV and Flame Resistant
- Cord Type: 3.2' SJTW 18/3 AWG cable
- Total lumens: 19200LM Max.
- Color temperature: 3000K/ 4000K/ 5000K/ 5700K
- Color rendering index: CRI ≥ 70
- Beam Angle: 90°x120°

### Applications:

- Ideal for general site lighting, alleys, loading docks, doorway, pathway and parking areas.
- Replace existing HID flood lights/ wall packs

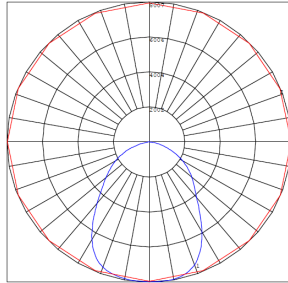
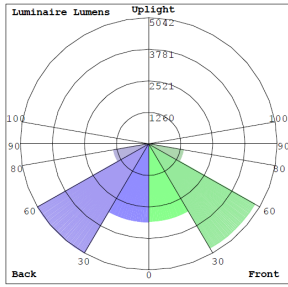
### Other Models:

- 300W | 38000LM | LFXPRO-XL-150-300W-MCTP-WH

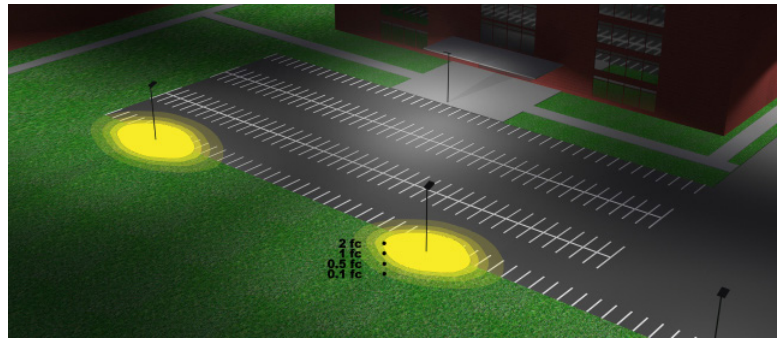


## Photometrics: LFXPRO-LG-50-150W-MCTP-WH

TYPE III



BUG Rating: B4-U0-G1



Area 65'x 75' Mounting Height: 20'

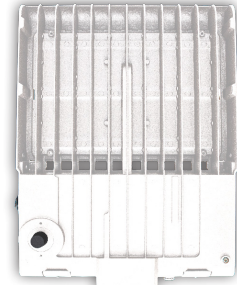
## Other Views:



Side View



Front View



Back View

## Performance Table: LFXPRO-LG-50-150W-MCTP-WH

MODEL NO.	Wattage	Voltage	Lumens	Color Temp.	BUG Rating	LPW
LFXPRO-LG-50-150W-MCTP-WH	50W	120~277V	6800LM	3000K 4000K 5000K 5700K	B4-U0-G1	125
			6950LM			
			7510LM			
	80W		7510LM			
			11000LM			
			11200LM			
	100W		11500LM			
			11500LM			
			13200LM			
			13500LM			
			14000LM			
			14000LM			
	150W		18700LM			
			18900LM			
			19200LM			
19200LM						

## Example:

1.LFXPRO-LG-50-150W-MCTP-WH

(For LFXPRO 150W MCTP fixture 120-277V)

2.LFXPRO-LG-50-150W-MCTP-WH  
WEC-8RC

(For LFXPRO 150W MCTP fixture 120-277V)  
(Remote Control)



# Sample Ordering

**Model**   **Size**   **Min. Wattage**   **Max. Wattage**   **Color**   **Temp.**   **Housing**

LFXPRO - LG - 50 - 150W - MCTP - WH

## Accessories Options

Blank = No Option For Accessories  
WEC-8RC = Optional Motion Sensor Remote Control

## Factory-Installed Options

Blank = No Option For Accessories  
OPT-EM-OD2EXT = Emergency Battery Backup  
OPT-3MPC = Microwave Photocell with a 1/2" threaded  
OPT-SEN-3MR-3 = Programmable Microwave Bi-Level Sensor

## ACCESSORIES:



WEC-8RC

## Factory-Installed Opotions:



OPT-SEN-3MR-3

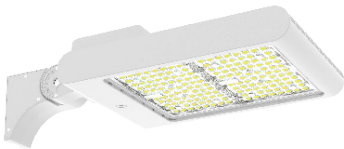


OPT-3MPC

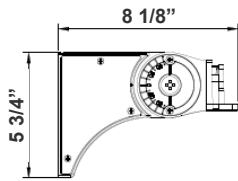


OPT-EM-OD2EXT

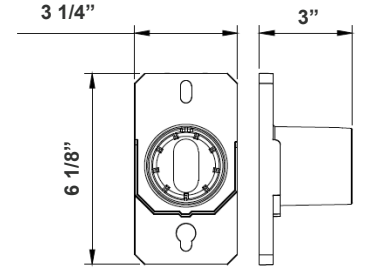
## Mounting Options:



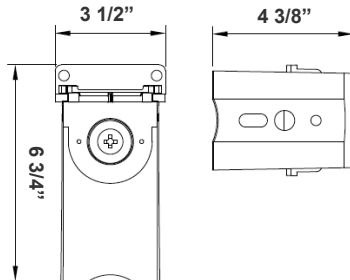
**LFX-ASA-WH**  
Adjustable Straight Arm  
3 1/3" x 7 7/8"



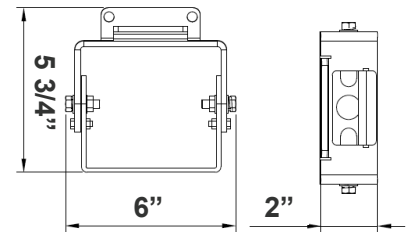
**LFX-SF-WH + LFX-PASF-WH**  
Pole Adapter for Slip Fitter 6 1/8"  
x 3 1/4" x 3"



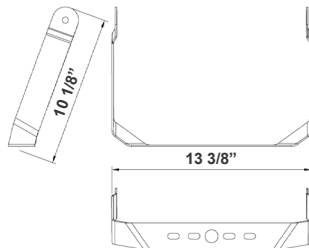
**LFX-EXT-WH**  
Straight Arm  
3 1/3" x 6 3/4" x 4 3/8"



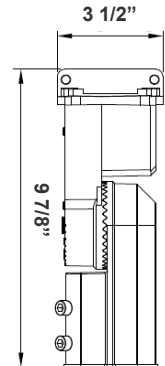
**LFX-YK-WH**  
Yoke  
5 3/4" x 6" x 2"



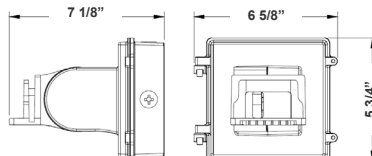
**LFX-TR-A-WH**  
U Bracket  
13 3/8" x 10 1/8"



**LFX-SF-WH**  
Slip Fitter  
3 1/3" x 7 7/8"



**LFX-AWB-WH**  
Adjustable Wall Junction Box  
7 1/8" x 6 5/8" x 5 3/4"



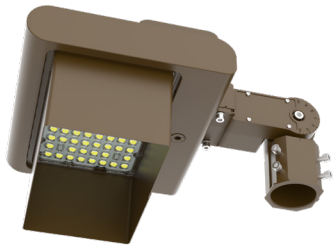
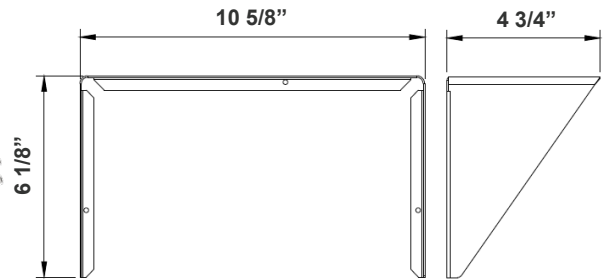
**Color Options:** LFXPRO-LG-50-150W-MCTP-WH  
Custom Color Available

Black   Silver   White   **Dark Bronze**   Green   Red   Yellow  
Default color

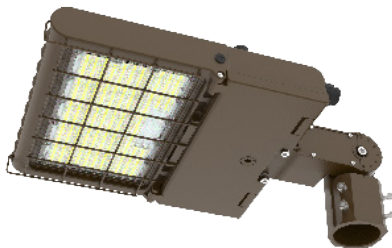
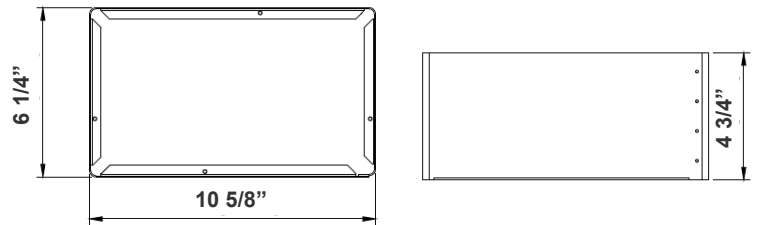
**Shroud & Wire Guard:** LFXPRO-LG-50-150W-MCTP-WH



**LF-SHROUD-A**  
Shroud  
6 1/8" x 10 5/8" x 4 3/4"  
Can be painted



**LF-SHROUD-D**  
Full-Glare Shroud  
6 1/4" x 10 5/8" x 4 3/4"  
Can be painted



**LFXPRO-WG-A**  
Wire Guard  
Can be painted





**COLOR CHART:** \* Choose from one of our Premium Colors with no set-up fee.

**Gloss:**



SILVER METALLIC  
70 GLOSS  
T357-GR105



SILVER METALLIC  
30 GLOSS  
T353-GR06



DARK RED 90  
GLOSS  
P009-RD02



INTERNATIONAL  
ORANGE 90  
GLOSS  
T009-OG26



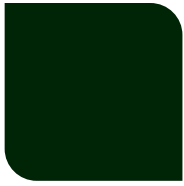
SAFETY ORANGE  
90 GLOSS  
T009-OG01



YELLOW 90  
GLOSS  
T009-YL14



YELLOW 90  
GLOSS  
T009-YL01



TRAFFIC GREEN  
70 GLOSS  
T007-GN16



GREEN 70 GLOSS  
T007-GN13



GREEN 60 GLOSS  
C006-GN03



BLUE 90 GLOSS  
T009-BL01



DARK BLUE 80  
GLOSS  
T008-BL20



RAL 8028 TERRA  
BROWN 90 GLOSS  
C209-BR358

**Hammer:**



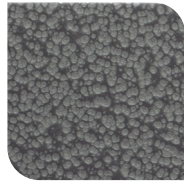
WHITE HAMMER  
T013-WH09



BEIGE HAMMER  
T013-BG38



GREY HAMMER  
C013-GR08



SILVER  
HAMMERTONE  
T064-GR05



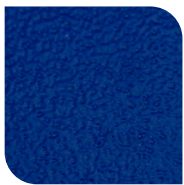
BLACK HAMMER  
T013-BK62



RED HAMMER  
T013-RD15



GREEN HAMMER  
T013-GN220



BLUE HAMMER  
T013-BL468



BRONZE HAMMER  
T012-BR161

**Texture:**



WHITE TEXTURE  
C031-WH120



FLINT GRAY  
TEXTURE  
T243-GR522



BLACK TEXTURE  
C241-BK109



RED TEXTURE  
T241-RD129



BLUE TEXTURE  
C241-BL544



OIL RUBBED  
BRONZE TEXTURE  
T291-BR251

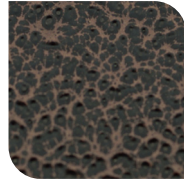
**Vein:**



BLACK/WHITE  
VEIN  
T075-WH34



SILVER VEIN  
T375-BK26



COPPER VEIN  
EXTERIOR  
T075-BK211



GOLD VEIN  
T375-BK10



COPPER VEIN  
T375-BK07

